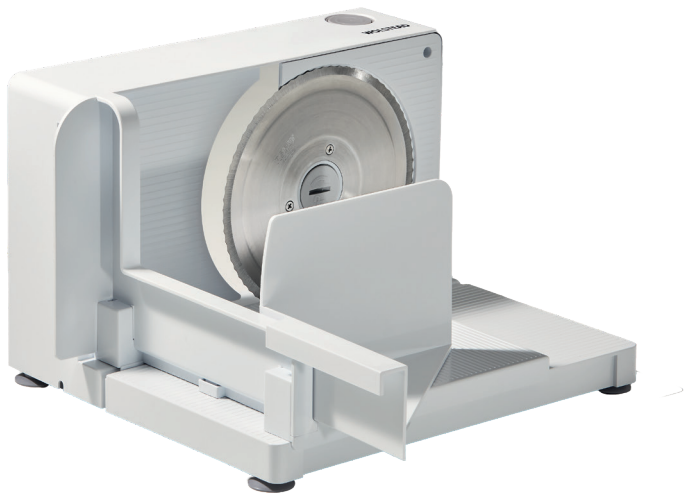


# WOLSTEAD

## Carva Food Slicer

Owner's Manual



### **IMPORTANT:**

Read and follow all warnings and instructions before assembling and using the appliance. Keep this manual for future reference.

**WOLSTEAD** Carva Food Slicer 716385

## SPECIFICATIONS

Model: 716385

Voltage: 230V~ 50Hz

Power consumption: 120W

## PRODUCT FEATURES

This versatile, portable food slicer is perfect for cutting a wide range of foods, including sausage, salami, cheese and bread. Its premium German-made stainless steel blade slices up to 20mm thick, while the lightweight, foldable design makes it easy to carry and store.

- Lightweight, foldable and portable
- Removable 17cm stainless steel blade made in Solingen, Germany
- Adjustable thickness from 1 to 20mm
- Child safety switch
- Non-slip feet
- Large food carriage

## SAFETY PRECAUTIONS

When using this electrical appliance, basic safety precautions should always be followed to reduce the risk of fire, electric shock, and/or injury, including the following:

1. Read all instructions before using.
2. Ensure the voltage is compliant with the voltage range stated on the rating label.
3. If the supply cord is damaged, it must be replaced by the manufacturer, its service agent or similarly qualified persons in order to avoid a hazard.
4. This appliance is not intended for use by persons (including children) with reduced physical, sensory or mental capabilities, or lack of experience and knowledge, unless they have been given supervision or instruction concerning use of the appliance by a person responsible for their safety.
5. Children should be supervised to ensure that they do not play with the appliance.
6. This appliance is intended to be used in household and similar applications such as:
  - A. Staff kitchen areas in shops, offices and other working environments.
  - B. Farmhouses.
  - C. By clients in hotels, motels and other residential type environments.
  - D. By bed and breakfast type environments.
7. To protect against electric shock, do not place the cord, plug or the base of the appliance in water or any other liquid.
8. Do not use attachments or accessories which are not recommended by the manufacturer.

9. The product is only suitable for the purpose indicated in this manual. Do not use this product or any part for other purposes. If it is operated incorrectly, it may cause injury.
10. Always use the appliance on a firm and stable surface and keep it 30cm from other objects and the wall. Keep the cooktop at least 5cm to 10cm from other objects and the wall to ensure heat is easily released and use in a well ventilated area.
11. Do not place the appliance on or near a hot surface, including a gas or electric stove, or in a heated oven.
12. Do not move the appliance when in use.
13. Do not place anything on top of the appliance while in operation or when storing.
14. Use indoors only.
15. This appliance is designed for short use durations only. Do not use the appliance continuously for more than five minutes.
16. After five minutes of continuous use, the appliance must be allowed to cool for a minimum of 30 minutes.
17. Only slice foods such as cheese, boneless meats, and bread. Do not attempt to slice frozen foods or bones.
18. Never use the slicer without the carriage and food pusher properly assembled.
19. Always hold the food against the sliding carriage using the food press.
20. Do not use bare hands to guide food against the blade..
21. Switch off the slicer before changing accessories or cleaning.
22. The blade is extremely sharp. Handle with care to prevent injury, especially when cleaning.
23. To maintain food hygiene, keep the appliance clean at all times.
24. Keep hands away from moving parts.
25. Always ensure the control switch is OFF before plugging into the wall. To unplug, first turn OFF, then remove the plug from the outlet.
26. Always unplug the appliance before disassembling or cleaning.
27. Do not use the appliance with an extension cord.

## SAFETY LOCK FEATURE

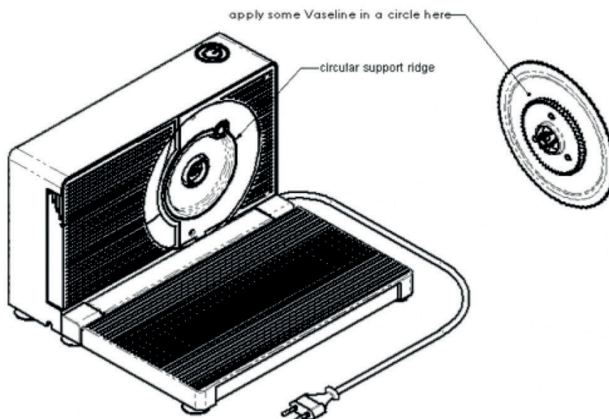
- The Wolstead Carva Slicer includes a child safety lock.
- The On/Off switch is on the top.
- The button can only be pressed when the safety lock (located on the side of the slicer with a padlock icon) is held down.
- When the safety lock is engaged, press it with a finger while pressing the On/Off button with your thumb.

## OPERATING INSTRUCTIONS

1. Adjust the slice thickness using the adjustment knob at the rear.
2. Place the food on the carriage and turn the slicer on at the power outlet. Press and hold both the ON switch and safety lock button to use.
3. Gently move the carriage back and forth, without pressing food too firmly into the blade.
4. Each cutting stroke should last two to three seconds. Your backward stroke should be equal or slightly longer.

## CLEANING AND MAINTENANCE

1. Ensure the unit is OFF and unplugged and the adjustment knob is turned to zero before cleaning.
2. Wipe all parts clean with a damp soft cloth. Do not place parts in the dishwasher.
3. Ensure all parts are completely dry before storage
4. Never immerse the appliance in water.
5. Ensure all parts are completely dry before storage.
6. To clean the blade: Use a soft, slightly damp, lint-free cloth. The blade can be removed for cleaning. After cleaning, promptly reinstall it for safety. Apply a small amount of petroleum jelly (e.g. Vaseline) to the back of the blade where it contacts the circular support ridge.
7. To clean the sail (counter blade): The sail controls slice thickness and can also be removed for cleaning. To remove, turn the thickness knob to thicker than zero, then back toward zero. Apply slight force to move past zero (an imaginary 'negative thickness') until the sail can be removed.
8. To reinstall the sail: Set the knob to the same imaginary 'less than zero' position. Insert the sail into the cavity. Turn the knob back to zero and beyond to confirm it's correctly installed. If the thickness knob adjusts properly, the sail is installed correctly.



# WARRANTY

## Get in touch with Customer Service

If you experience any issues with your Wolstead Carva Food Slicer, get in touch with our Customer Service team by email at [customerservice@kitchenwarehouse.com.au](mailto:customerservice@kitchenwarehouse.com.au) or by phone on 1800 332 934 between the hours of 9am and 7pm (AEST) Monday to Friday. Alternatively you can use the Live Chat function on our website by visiting [www.kitchenwarehouse.com.au/contact-us](http://www.kitchenwarehouse.com.au/contact-us)

## 90 day money back guarantee

We promise you a full refund within 90 days if your Wolstead product does not fulfil your expectations. This guarantee applies to qualified purchases of all Wolstead branded products from participating stockists online and in-store from eligible delivery locations. The qualified product must be returned within 90 days from the date of purchase. We shall issue a full refund when the customer presents proof of purchase. We shall issue a store credit when proof of purchase is unavailable. The product packaging is not required to avail of the refund. The amount refunded will be the price of the products in the currency shown on the proof of purchase.

## Exclusions

This warranty does not apply if proper care and/or usage instructions are not followed. This warranty does not cover scratches, stains, discoloration or damage caused by misuse.

## How to claim

If a fault/defect is identified cease using the Product immediately. To make a claim on this guarantee, take the Product, proof of purchase and full details of the alleged defect to any Kitchen Warehouse store.

## Limitations

We make no express warranties or representations other than as set out in this guarantee. The replacement of the Product or the refund of the purchase price is the absolute limit of our liability under this guarantee.

## Warranty

Our goods come with guarantees that cannot be excluded under the Australian Consumer Law. You are entitled to a replacement or refund for a major failure and for compensation for any other reasonably foreseeable loss or damage. You are also entitled to have the goods repaired or replaced if the goods fail to be of acceptable quality and the failure does not amount to a major failure.

The benefits of this warranty are in addition to any rights and remedies imposed by Australian State and Federal legislation that cannot be excluded. Nothing in this warranty excludes, restricts or modifies any State or Federal legislation applicable to the supply of goods which cannot be so excluded, restricted or modified.

## Guarantee

We warrant that, subject to the exclusions and limitations below, the Product will be free from defects in materials and workmanship under normal domestic household use for the 12 month warranty period. The warranty period commences on the date of sale by the original retailer to the original purchaser. The warranty applies only while the Product is owned by the original purchaser.

Use of the Product in a commercial capacity will void this warranty. If a defect appears in the Product before the end of the warranty period and we find the Product to be defective in materials or workmanship, we will replace the Product with a product comparable in quality and value.

We reserve the right to change or discontinue our product ranges at any time without notice and without liability.

# WOLSTEAD

Distributed by Kitchen Warehouse.

Wolstead is a registered trademark of Kitchen Warehouse Pty Ltd. The printed material appearing in this document and related packaging is protected by copyright.

Kitchen Warehouse Pty Ltd  
1 Pensioner Guard Road  
North Fremantle, WA, 6159  
[www.kitchenwarehouse.com.au](http://www.kitchenwarehouse.com.au)  
1800 332 934  
[customerservice@kitchenwarehouse.com.au](mailto:customerservice@kitchenwarehouse.com.au)